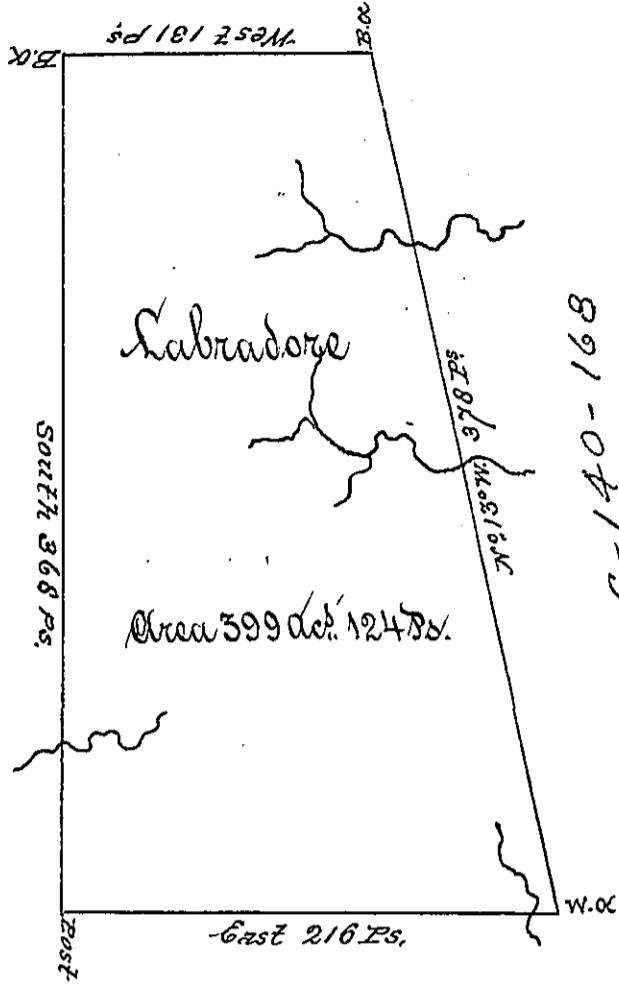


Haverer
Beaver

161
P12-256

C. 85-289.

512-560



C-140-168

the adjoining persons not mentioned

A Draught of a survey called "Sabradore" situate on the waters of Roason Cr. in Washington County, cont. 399 ac. 124 Ps. strict measure, executed Jan^y 18th 1786 in consequence of a Certif^{ic} for 400 ac. granted to Heagins Gate by the Commiss^{rs} appointed by Virg^a to adjust the Claims to unpatented Lands in the Counties Heanong, Yohg^a and Ohio, and duly enter^d with the County Surveyor as appears from the List of Entries transmitted from the Surv^r Gen^l Office Ent^d 28th Nov^r 80.

Rec^d 15th May 1787

Jno Lukens Esq^r S. Gen^l

Fresley Trevill }
Heath Ritchie } D. Ss

IN TESTIMONY that the above is a copy of the original remaining on file in the Department of Internal Affairs of Pennsylvania, made conformably to an Act of Assembly approved the 16th day of February, 1833, I have hereunto set my Hand and caused the Seal of said Department to be affixed at Harrisburg, this seventh day of January 1902.

James W. Latta
Secretary of Internal Affairs.